

NEPLUS(NE-SM1)

SUPER MESH NEBULIZER

Clinical Test Completed!

(Basic & Clinical Pharmacology & Toxicology, 2016, 118, 313–319 Doi: 10.1111/bcpt.12499)

- **Most strong mesh**
(No metal dust & No hole block)
- **No disposable kit**
(Reusable silicon mask & mouth piece, Li-Ion battery)
- **Noiseless operation**
- **Rechargeable battery with smart phone USB cable**

1,000 Times Noiseless Than Jet Nebulizer
(Excellent Use for Baby During Sleep)



Silicon Mask & Mouth Piece can be boiled or sterilized under autoclave

Features

- NEPLUS is ideal for the On-The go treatment of lower airways respiratory diseases like asthma even in public places.
- NEPLUS sprays liquid medication into lung as aerosols.
- NEPLUS allows using various type of liquid medication directly without dilution.
- Vibrating mesh releases medication via 4um of fine holes.
- Noiseless operation with rechargeable Li-ion battery.
- Residual volume is under 1% by world patented technology.
- Inhalation is possible at over 75° of tilt angle.

model **NE-SM1**



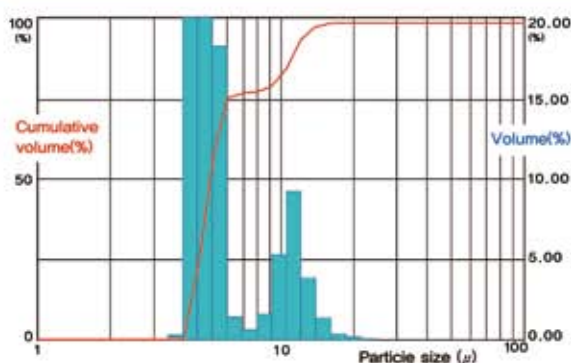
NEPLUS(NE-SM1)

SUPER MESH NEBULIZER

Clinical Test Completed!



Technical Data



Type	Pulmicort	Ventolin
Ultrasonic Nebulizer	Bad	Available
Mesh Nebulizer	Excellent	Excellent

Specifications

Model	NE-SM1
Power & Consumption	Lithium Ion, DC 3.6~4.2V
Dimensions	(W)×(D)×(H) = 52mm×53mm×109mm
Weight	Main unit : 88g, Mask : 50g
Nebulization rate	Approximately 0.25ml/min
Particle size	Average 5μm
Volume of medication bottle	6ml
Operating time under full charge	Approximately 2hours
Charging life cycle of the battery	over 500 cycles
Ultrasound frequency	Approximately 108 KHz
Operating environment	10~40°C, related humidity 30~85%
Battery charging environment	0~45°C
Storage environment	0~30°C
Contents	Nebulizer unit, Small Mask, Mouth Piece, Mask Adaptor, USB Cable, Carrying Bag, Instruction Manual

*All specifications are subject to change prior notice.



Comparison Test



KTMED Mesh(Super Alloy)

KTMED Mesh is made by Palladium-based Super Alloy
→ **Very Expensive**

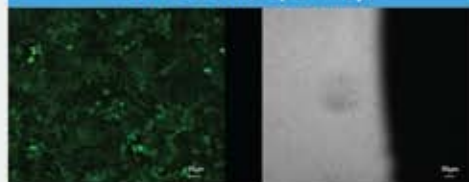


C** & T** Mesh(SUS)

C** & T** Mesh is made by SUS(Fe)
→ **Very Cheap**

| Cytotoxicity Test |

KTMED Mesh(Super Alloy)



C** & T** Mesh(SUS)



Fluorescent microscopic image (GFP transfected L-929 cell) Bright field image (GFP transfected L-929 cell)

Control

